

**INSTRUMENT APPROACH  
CHART (IAC)**

**BRASÍLIA / Presidente Juscelino Kubitschek, INTL (SBBR)**

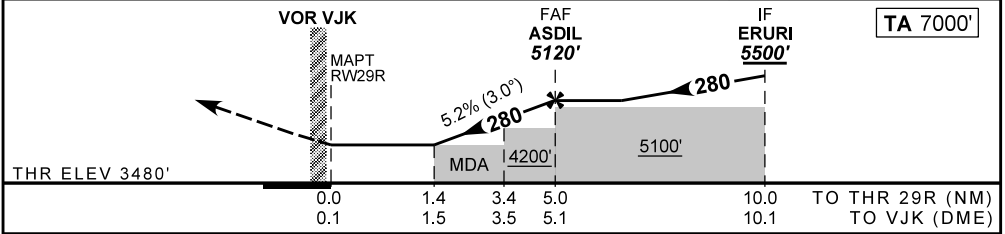
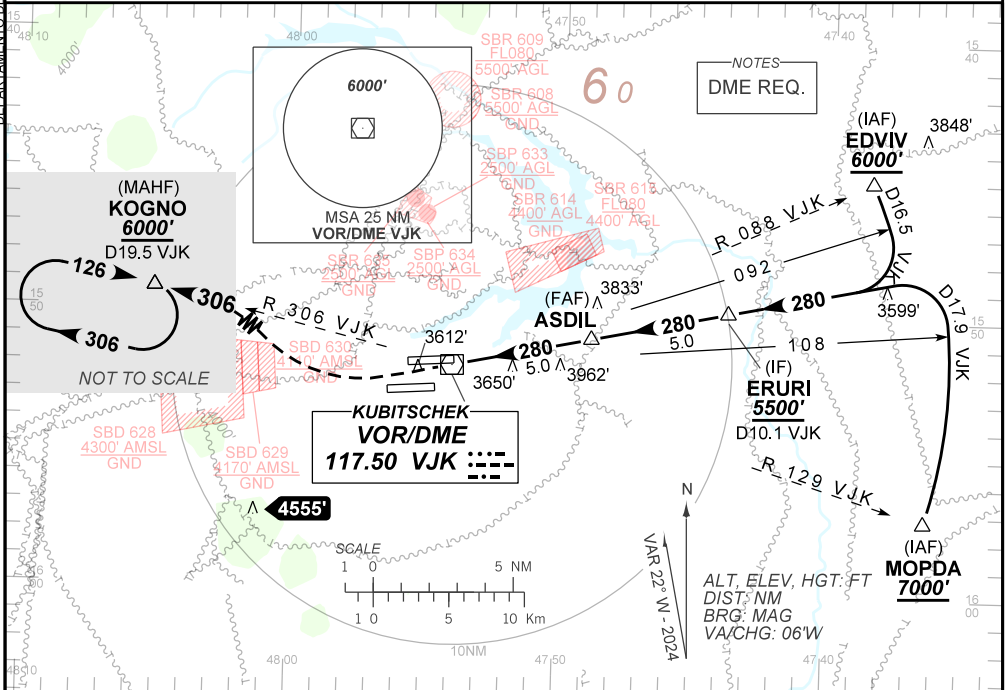
**VOR Y RWY 29R**

**AD ELEV: 3498'**

D-ATIS <b>127.80</b>	APP BRASÍLIA <b>120.65 129.15 129.60 119.50</b>			TWR BRASÍLIA <b>118.10 118.45 118.75</b>	GNDC BRASÍLIA <b>121.80 121.95</b>
VOR VJK <b>117.50 MHz</b>	FINAL CRS <b>280°</b>	FAF: <b>5120'</b>	<b>N/A</b>		VOR MDA / (OCH): <b>3970' / (490')</b>

APCH Perdida: Subir para **6000'**. Curvar à DIREITA para interceptar RDL **306** do VOR VJK até KOGNO para espera.

Missed APCH: Climb to **6000'**. Turn **RIGHT** to intercept RDL **306** VOR VJK until KOGNO for holding.



RWY29R	1.4	2.0	3.0	4.0	ASDIL	Ground Speed (KT)	090	110	130	150	170	190
ALT	3970	4167	4485	4804	5120	FPM	500	600	700	800	900	1000
(HGT)	490	687	1005	1324	1640	FAF-MAPT	NA					

STRAIGHT-IN	CAT	A	B	C	D	E
	MDA / (OCH)	3970' / (490')				
VOR	ALS/NO ALS/ RVR ALS (m)	800 / 1600 / NIL			1500 / 2300 / NIL	
	MDA / (OCH)	NA				
CIRCLING	MDA / (OCH)	NA				
	VIS (m)	NA				