

INSTRUMENT APPROACH  
CHART (IAC)

PONTA PORÃ / Ponta Porã, INTL (SBPP)

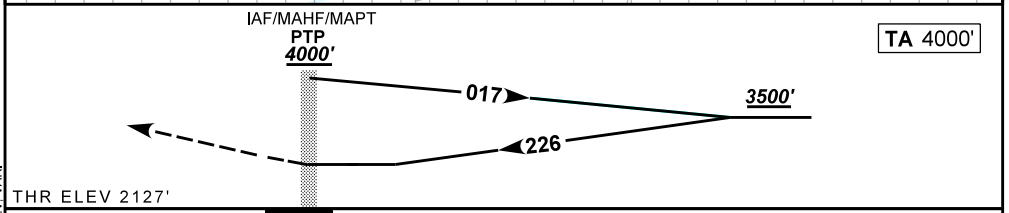
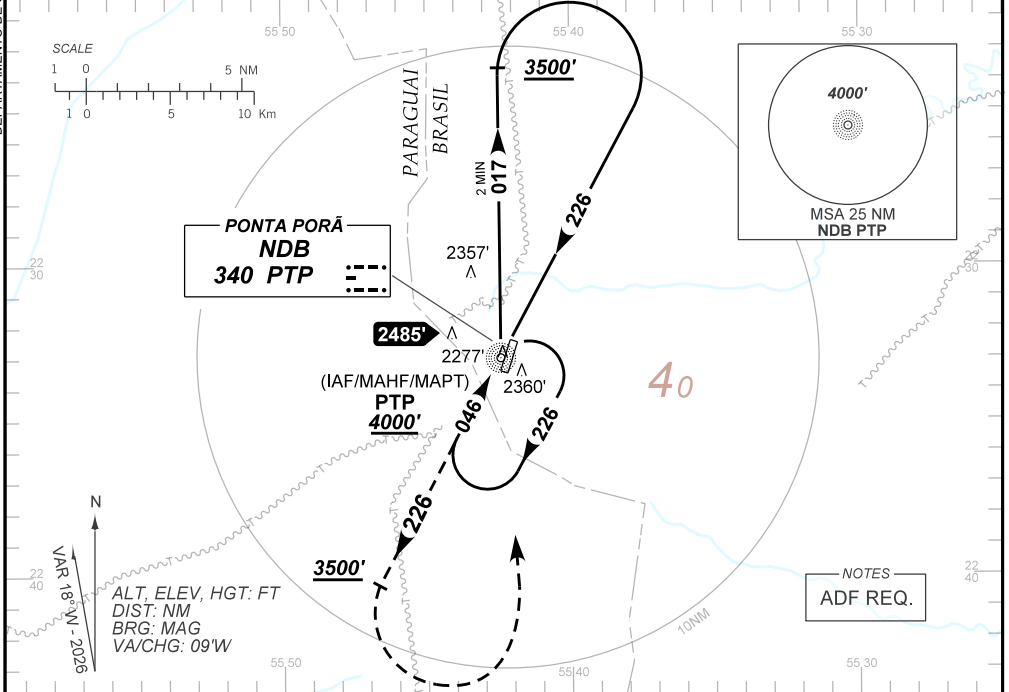
AD ELEV: 2152'

NDB RWY 22

ATIS NIL	APP NIL	AFIS PONTA PORÃ 125.90	GNDC NIL
NDB PTP 340 KHz	FINAL CRS 226°	N/A	NDB MDA / (OCH): 2690' / (570')

APCH Perdida: 1) Subir para **4000'**. Manter QDR **226** do NDB PTP até cruzar **3500'**. Após, curvar à ESQUERDA direto NDB PTP para espera. 2) IAS MAX 230KT.  
Missed APCH: 1) Climb to **4000'**. Maintain **226** QDR PTP NDB until passing **3500'**. After, turn LEFT direct PTP NDB for holding. 2) IAS MAX 230KT.

DEPARTAMENTO DE CONTROLE DO ESPAÇO AÉREO



RWY22	NIL	Ground Speed (KT)	090	110	130	150	170	190
ALT	NIL	FPM	650					
(HGT)	NIL	FAF-MAPT	NA					

STRAIGHT-IN	CAT	A	B	C	D	E
NDB	MDA / (OCH)	2690' / (570')				
	ALS/NO ALS/ RVR ALS (m)	NIL / 1600 / NIL		NIL / 2600 / NIL		
CIRCLING	MDA / (OCH)	NA				
	VIS (m)					

CHANGES: AD ELEV, BRG, MINM OPR, THR ELEV, VAR.