

INSTRUMENT APPROACH CHART (IAC)

TAUBATÉ / Base de Aviação de Taubaté, MIL (SBTA)

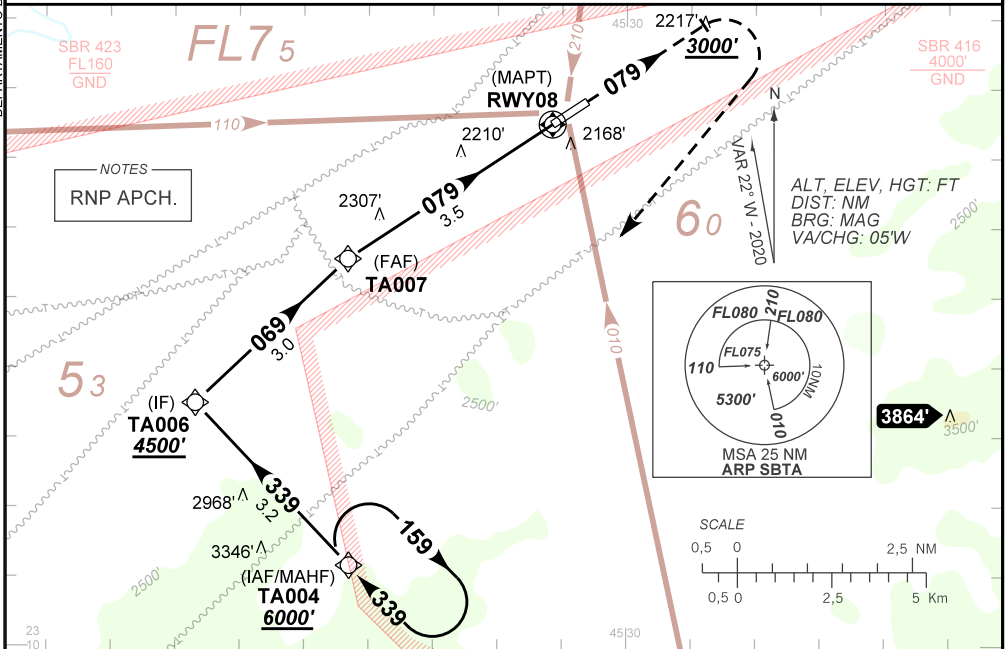
RNP RWY 08

AD ELEV: 1902'

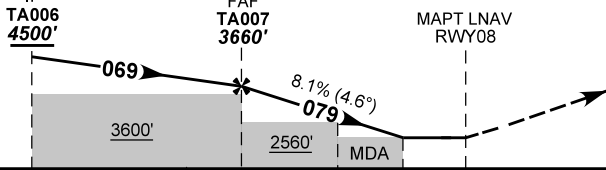
| | | | | |
|--------------------|--------------------------|------------------------------|-------------------------------|--|
| ATIS NIL | APP NIL | TWR TAUBATÉ 119.90 | TWR PIONEIRO 118.85 | GNDC TAUBATÉ 121.70 |
| N/A | FINAL CRS 079° | FAF: 3660' | N/A | LNAV MDA / (OCH): 2460' / (560') |

APCH Perdida: Subir para **6000'**. Manter rumo **079** até **3000'**. Após, curvar à DIREITA direto TA004 para espera.
Missed APCH: Climb to **6000'**. Maintain course **079** until **3000'**. After, turn RIGHT direct TA004 for holding.

DEPARTAMENTO DE CONTROLE DO ESPAÇO AÉREO



TA 6000'



TO THR 08 (NM) 6.5 3.5 1.5 1.1 0.0 THR ELEV 1902'

| | | | | | | | | | | |
|--|-------|------|------|------|-------|----------|-----|-----|-----|-----|
| | TA007 | 2.0 | 1.5 | 1.1 | RWY08 | KT | 060 | 070 | 080 | 090 |
| | 3660 | 2902 | 2675 | 2460 | ALT | FPM | 490 | 570 | 660 | 740 |
| | 1758 | 1000 | 773 | 560 | (HGT) | FAF-MAPT | NA | | | |

CHANGES: IDENT, LAYOUT.

| | | |
|-------------|-------------------------|-----------------|
| STRAIGHT-IN | CAT | H |
| | MDA / (OCH) | 2460' / (560') |
| LNAV | ALS/NO ALS/ RVR ALS (m) | NIL / 800 / NIL |
| | | |
| CIRCLING | MDA / (OCH) | NA |
| | VIS (m) | |