

DEPARTURE CHART  
INSTRUMENT (SID)

SÃO JOSÉ DOS CAMPOS / Prof. Urbano Ernesto Stumpf (SBSJ)

RWY 16/34

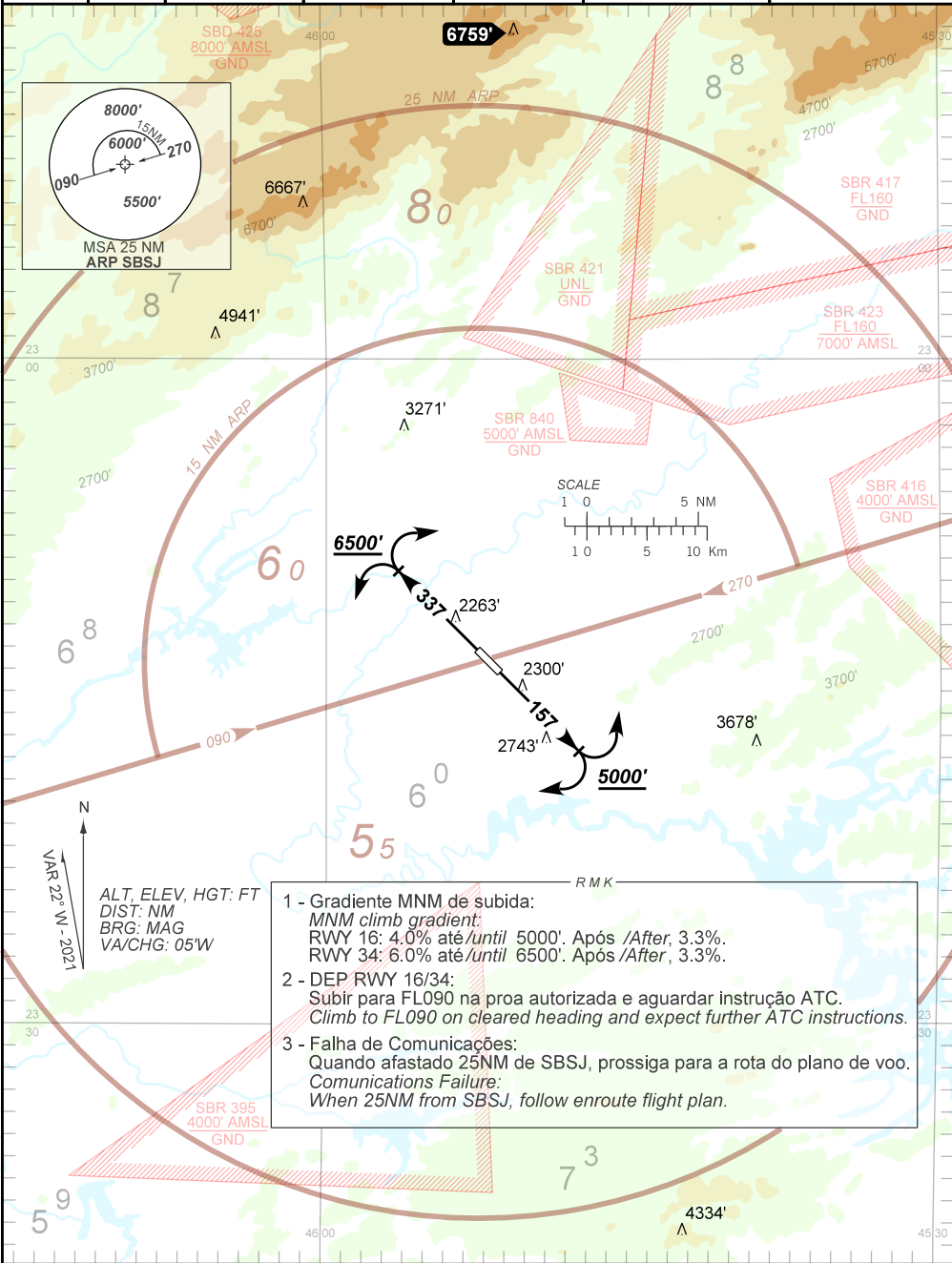
OMNI

AD ELEV: 2123'

TA 8000'	D-ATIS 127.925	TWR SÃO JOSÉ 118.50	APP SÃO PAULO 120.45 129.05 129.75	APP RIO 125.60 121.35 124.70	ACC CURITIBA 125.40 124.40 132.80 126.50 126.95	ACC BRASÍLIA 123.35 134.00 126.80 128.50 126.15
----------	-------------------	------------------------	--	------------------------------------	---	---

DEPARTAMENTO DE CONTROLE DO ESPAÇO AÉREO

CHANGES: AMA, EAC, LAYOUT.



ALT, ELEV, HGT: FT  
DIST: NM  
BRG: MAG  
VA/CHG: 05°W

- 1 - Gradiente MNM de subida:  
*MNM climb gradient:*  
RWY 16: 4.0% até/until 5000'. Após /After, 3.3%.  
RWY 34: 6.0% até/until 6500'. Após /After, 3.3%.
- 2 - DEP RWY 16/34:  
Subir para FL090 na proa autorizada e aguardar instrução ATC.  
*Climb to FL090 on cleared heading and expect further ATC instructions.*
- 3 - Falha de Comunicações:  
Quando afastado 25NM de SBSJ, prossiga para a rota do plano de voo.  
*Communications Failure:*  
*When 25NM from SBSJ, follow enroute flight plan.*