

**INSTRUMENT APPROACH
CHART (IAC)**

NATAL / Campo Augusto Severo, MIL (SBNT)

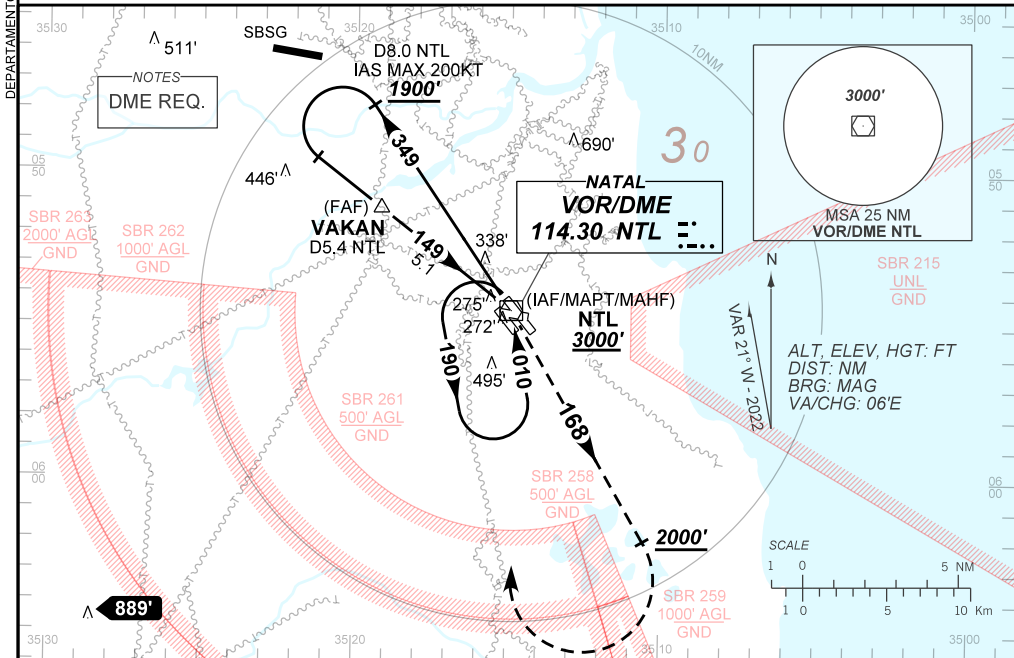
AD ELEV: 169'

VOR Z RWY 16R

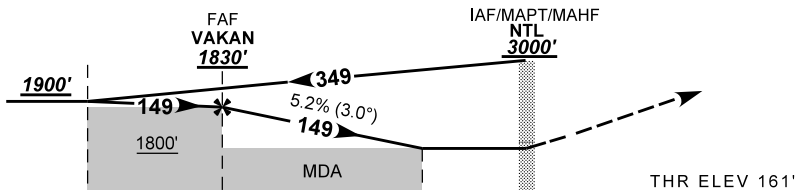
D-ATIS 132.65	APP NATAL 119.30 119.65 120.65 129.80			TWR NATAL 118.70 122.80	GNDC NATAL 121.90
VOR NTL 114.30 MHz	FINAL CRS 149°	FAF: 1830'	N/A	VOR MDA / (OCH): 650' / (490')	

APCH Perdida: 1) Subir para **3000'**. Manter a RDL **168** do VOR NTL até **2000'**. Após, curvar à DIREITA direto VOR NTL para espera. 2) IAS MAX 200KT.

Missed APCH: 1) Climb to **3000'**. Maintain **168** RDL NTL VOR until **2000'**. After, turn RIGHT direct NTL VOR for holding. 2) IAS MAX 200KT.



TA 4000'



TO THR 16R(NM)	7.7	5.1	1.4	0.0
TO NTL (DME)	8.0	5.4	1.7	0.3

VAKAN	4.0	3.0	2.0	1.4	RW16R	Ground Speed (KT)	090	110	130	150	170	190	
	1830	1485	1166	848	650	ALT	FPM	500	600	700	800	900	1000
	1669	1324	1005	687	490	(HGT)	FAF-MAPT	NA					

STRAIGHT-IN	CAT	A	B	C	D	E
VOR	MDA / (OCH)	650' / (490')				
	ALS/NO ALS/ RVR ALS (m)	NIL / 1600 / NIL		NIL / 2300 / NIL		
		NA				
CIRCLING	MDA / (OCH)	670' / (510')	910' / (750')	1190' / (1030')		
	VIS (m)	1600	3600	4800		