

**INSTRUMENT APPROACH
CHART (IAC)**

BELÉM / Val de Cans - Júlio Cezar Ribeiro, INTL (SBBE)

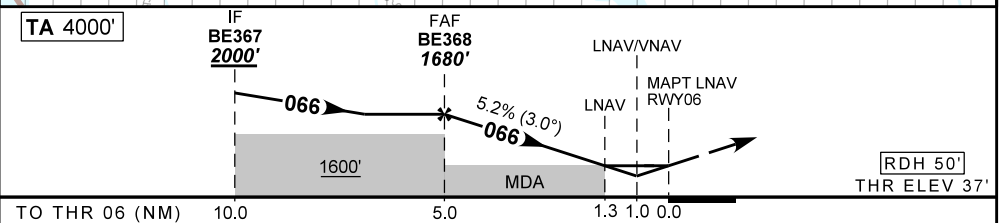
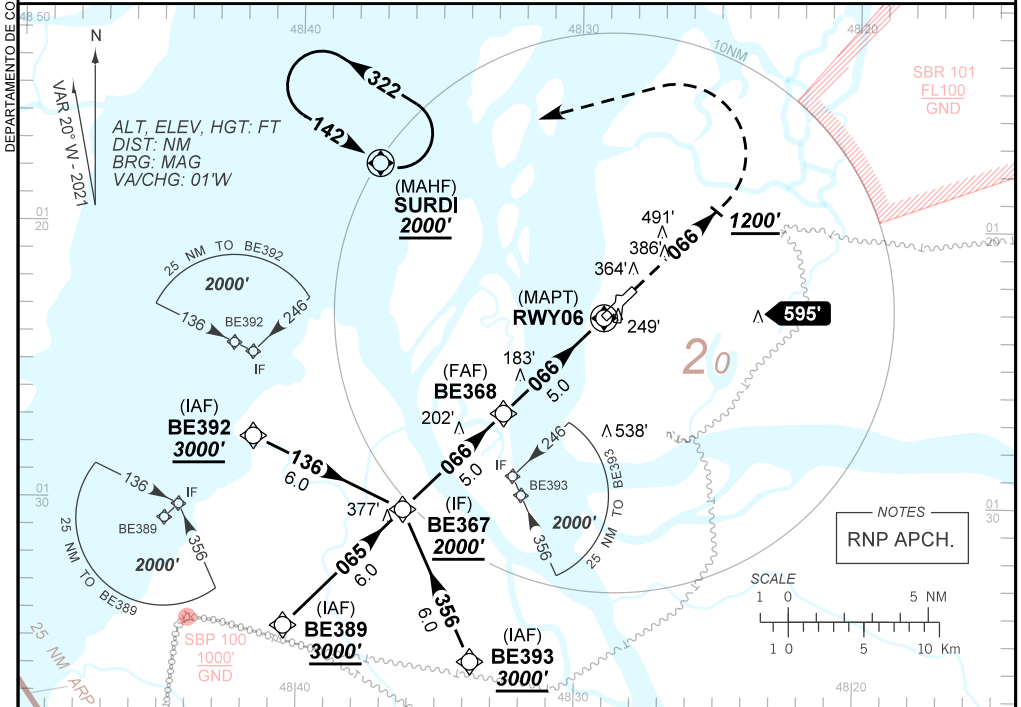
RNP Z RWY 06

AD ELEV: 56'

D-ATIS 127.60	APP BELÉM 119.05 119.50	TWR BELÉM 118.70	GNDC BELÉM 121.90
-------------------------	-----------------------------------	----------------------------	-----------------------------

TEMP LNAV/VNAV MIN 10°C / MAX 50°C	FINAL CRS 066°	FAF: 1680'	LNAV/VNAV DA / (OCH): 398' / (361')	LNAV MDA / (OCH): 490' / (460')
--	--------------------------	----------------------	---	---

APCH Perdida: Subir para **2000'**. Manter o proa **066** até **1200'**. Após, curvar à ESQUERDA direto SURDI para espera.
Missed APCH: Climb to **2000'**. Maintain heading **066** until **1200'**. After, turn LEFT direct to SURDI for holding.



	BE368	4.0	3.0	2.0	1.3	RWY06	Ground Speed (KT)	090	110	130	150	170	190
	1680	1361	1042	724	490	ALT	FPM	500	600	700	800	900	NA
	1643	1324	1005	687	460	(HGT)	FAF-MAPT	NIL					

STRAIGHT-IN	CAT	A	B	C	D	E
	DA / (OCH)	398' / (361')				
LNAV/VNAV	ALS/NO ALS/ RVR ALS (m)	800 / 1600 / NIL		1000 / 1700 / NIL		
	MDA / (OCH)	490' / (460')				
LNAV	ALS/NO ALS/ RVR ALS (m)	800 / 1600 / NIL		1400 / 2100 / NIL		
	MDA / (OCH)	NA				
CIRCLING	MDA / (OCH)	NA				
	VIS (m)	NA				

CHANGES: IDENT LAYOUT: PROC. VAR.