

**INSTRUMENT APPROACH
CHART (IAC)**

MACEIÓ / Zumbi dos Palmares, INTL (SBMO)

AD ELEV: 388'

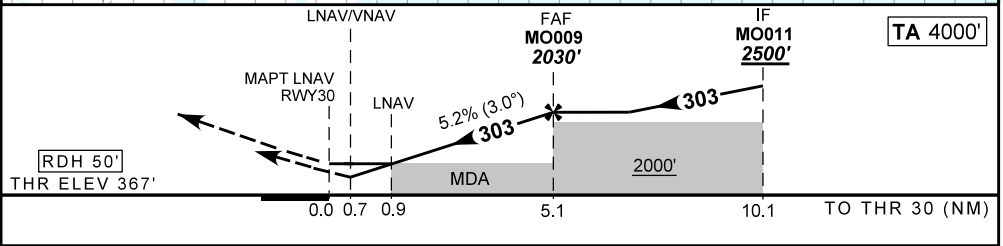
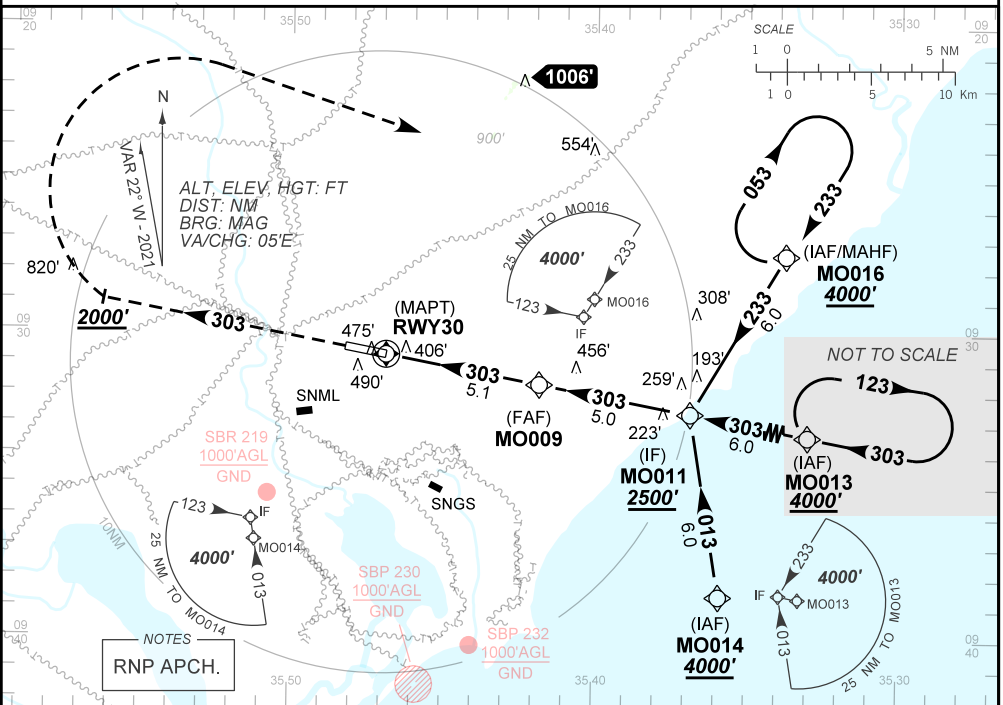
RNP RWY 30

D-ATIS NIL	APP MACEIÓ 119.25 128.90	TWR MACEIÓ 118.00 118.25	GNDC NIL
TEMP LNAV/VNAV MIN 10°C / MAX 50°C	FINAL CRS 303°	FAF: 2030'	LNAV/VNAV DA / (OCH): 631' / (264')
		LNAV	MDA / (OCH): 700' / (340')

APCH Perdida: Subir para **4000'**. Manter proa **303** até **2000'**. Após, curvar à DIREITA direto MO016 para espera.

Missed APCH: Climb to **4000'**. Maintain heading **303** until **2000'**. After, turn RIGHT direct MO016 for holding.

DEPARTAMENTO DE CONTROLE DO ESPAÇO AÉREO



RWY30	0.9	2.0	3.0	4.0	MO009		Ground Speed (KT)	090	110	130	150	170	190
ALT	700	1054	1373	1691	2030		FPM	500	600	700	800	900	NA
(HGT)	340	687	1006	1324	1663		FAF-MAPT	NA					

STRAIGHT-IN	CAT	A	B	C	D	E	
	DA / (OCH)	631' / (264')					NA
LNAV/VNAV	ALS/NO ALS/ RVR ALS (m)	NIL / 1300 / NIL					
	MDA / (OCH)	700' / (340')					
LNAV	ALS/NO ALS/ RVR ALS (m)	NIL / 1600 / NIL					
	MDA / (OCH)	NA					
CIRCLING	MDA / (OCH)	NA					
	VIS (m)	NA					

CHANGES: ADEL, FREQ, IDENT, LAYOUT, VAR.