

**INSTRUMENT APPROACH  
CHART (IAC)**

**BRASÍLIA / Pres. Juscelino Kubitschek, INTL (SBBR)**

**AD ELEV: 3498'**

**ILS X or LOC X RWY 29L**

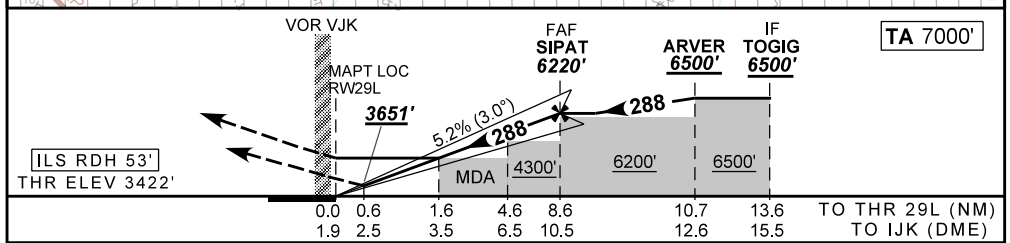
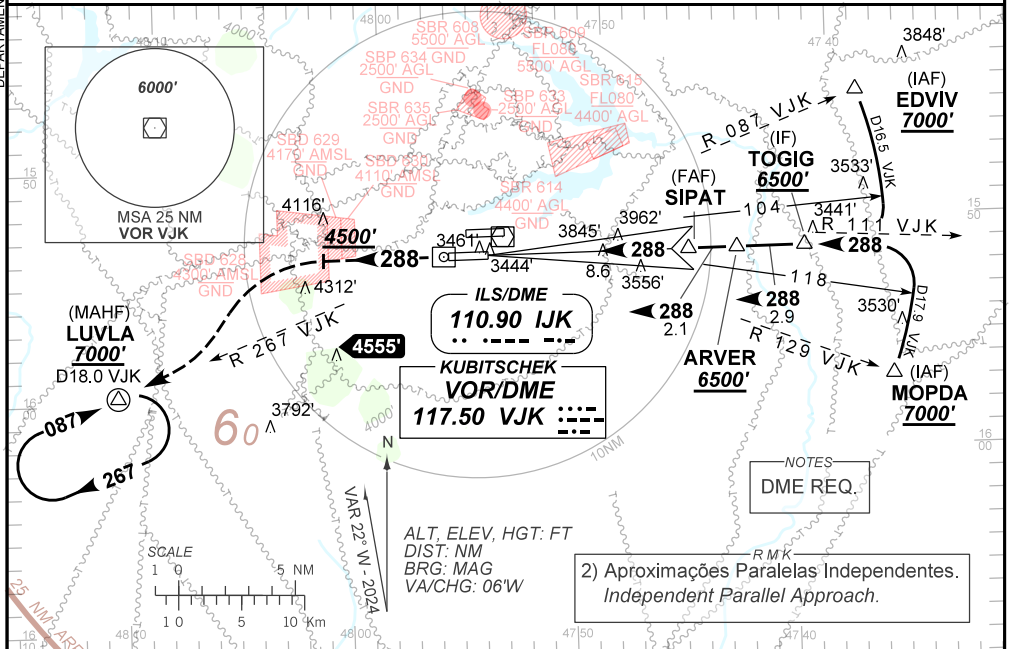
<b>D-ATIS</b> 127.80	<b>APP BRASÍLIA</b> 119.70 129.60 119.20 120.00	<b>TWR BRASÍLIA</b> 118.10 118.45 118.75	<b>GNDC BRASÍLIA</b> 121.80 121.95
-------------------------	--	---	---------------------------------------

<b>ILS/DME IJK</b> 110.90 MHz	<b>FINAL CRS</b> 288°	<b>FAF:</b> 6220'	<b>CAT I</b> DA / (OCH): <b>3651' / (229')</b>	<b>LOC</b> MDA / (OCH): <b>3990' / (570')</b>
----------------------------------	--------------------------	----------------------	---	--

APCH Perdida: Subir para **7000'**. Manter proa **288** até **4500'**. Após, curvar à ESQUERDA RDL **267** do VOR VJK até LUVLA para espera.

Missed APCH: Climb to **7000'**. Maintain heading **288** until **4500'**. Then, turn LEFT **267** RDL VJK VOR direct LUVLA for holding.

RMK: 1) (\*)VIS RVR ALS 550m para APCH utilizando Diretor de Voo, Piloto Automático ou Head-Up Display(HUD).  
(\*) VIS RVR ALS 550m for approach using a Flight Director, Autopilot or Head-Up Display (HUD).



RWY29L	1.6	2.0	3.0	4.0	5.0	SIPAT	Ground Speed (KT)	090	110	130	150	170	190
ALT	3990	4112	4430	4748	5067	6220	FPM	500	600	700	800	900	1000
(HGT)	570	690	1008	1326	1645	2798	FAF-MAPT	NA					

STRAIGHT-IN	CAT	A	B	C	D	E
		3651' / (229')				
CAT I	DA / (OCH)	800 / 1200 / 700 (*)				
	ALS/NO ALS/ RVR ALS (m)					
LOC	MDA / (OCH)	3990' / (570')				
	ALS/NO ALS/ RVR ALS (m)	800 / 1600 / 700		1900 / 2600 / NIL		
CIRCLING	MDA / (OCH)	NA				
	VIS (m)					

DEPARTAMENTO DE CONTROLE DO ESPAÇO AÉREO