

INSTRUMENT APPROACH  
CHART (IAC)

PORTO ALEGRE / Canoas, MIL (SBCO)

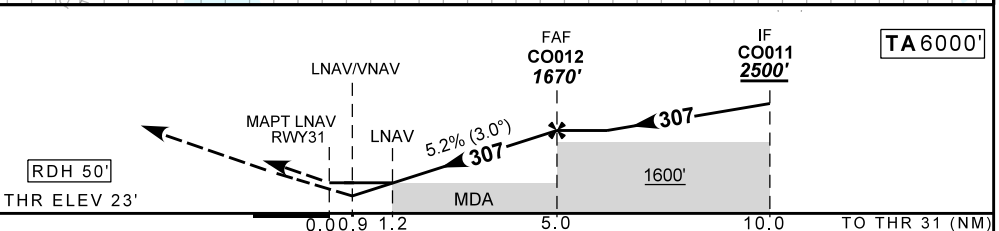
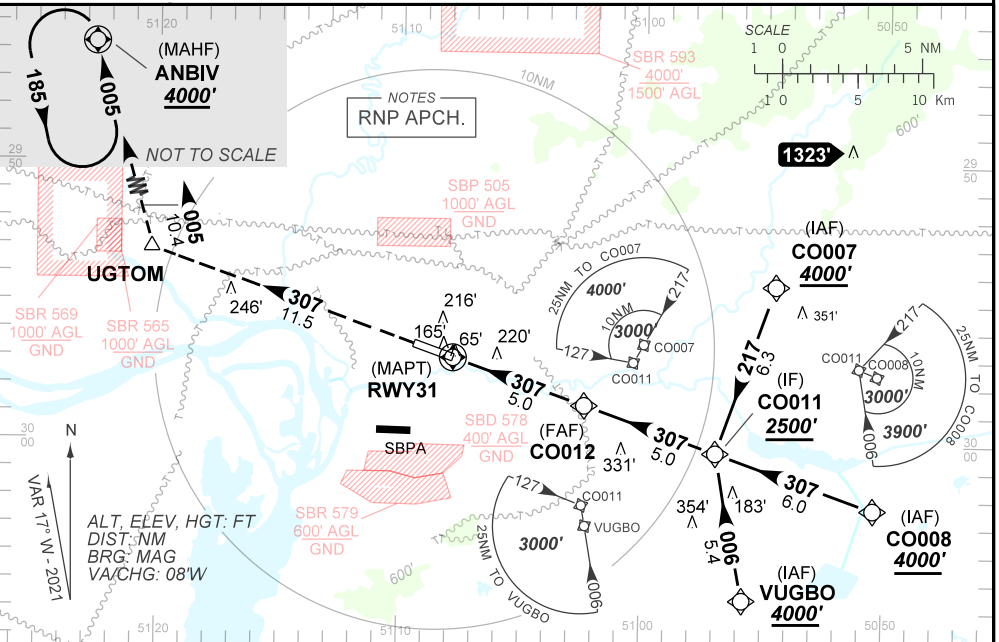
AD ELEV: 26'

RNP Z RWY 31

ATIS NIL	APP PALEGRE 119.00 120.10 120.55 128.90	TWR CANOAS 118.50 122.80(MIL)	GNDC CANOAS 121.70
TEMP LNAV/VNAV MIN -10°C / MAX 50°C	FINAL CRS 307°	FAF: 1670'	LNAV/VNAV DA / (OCH): 374' / (360')
		LNAV MDA / (OCH): 460' / (440')	

APCH Perdida: 1) Subir para **4000'**, gradiente MNM 3.9%. Manter rumo **307** até UGTOM. Após, curvar à DIREITA rumo **005** até ANBIV para espera.  
Missed APCH: 1) Climb to **4000'**, MNM gradient 3.9%. Maintain course **307** up to UGTOM. Then, turn RIGHT course **005** up to ANBIV for holding.

RMK: NIL



RWY31	0.9	1.2	2.0	3.0	4.0	CO012	Ground Speed (KT)	090	110	130	150	170	190
ALT	374	460	713	1031	1350	1670	FPM	500	600	700	800	900	1000
(HGT)	360	440	687	1005	1324	1642	FAF-MAPT	NA					

STRAIGHT-IN	CAT	A	B	C	D	E
	DA / (OCH)	374' / (360')				NA
LNAV/VNAV	ALS/NO ALS/ RVR ALS (m)	NIL / 1600 / NIL				NA
	MDA / (OCH)	460' / (440')				
LNAV	ALS/NO ALS/ RVR ALS (m)	NIL / 1600 / NIL		NIL / 2000 / NIL		
	MDA / (OCH)	NA				
CIRCLING	MDA / (OCH)	NA				
	VIS (m)	NA				

DEPARTAMENTO DE CONTROLE DO ESPAÇO AÉREO / CHANGES: BRG, EAC, IDENT, F, LAYOUT, OBST, RMK, TA, VAR.