

STANDARD ARRIVAL CHART  
INSTRUMENT (STAR)

BRASÍLIA / Pres. Juscelino Kubitschek, INTL (SBBR)

RWY 11L / 11R

RNAV KOGNO 2A - SIPIG 2A

AD ELEV: 3498'

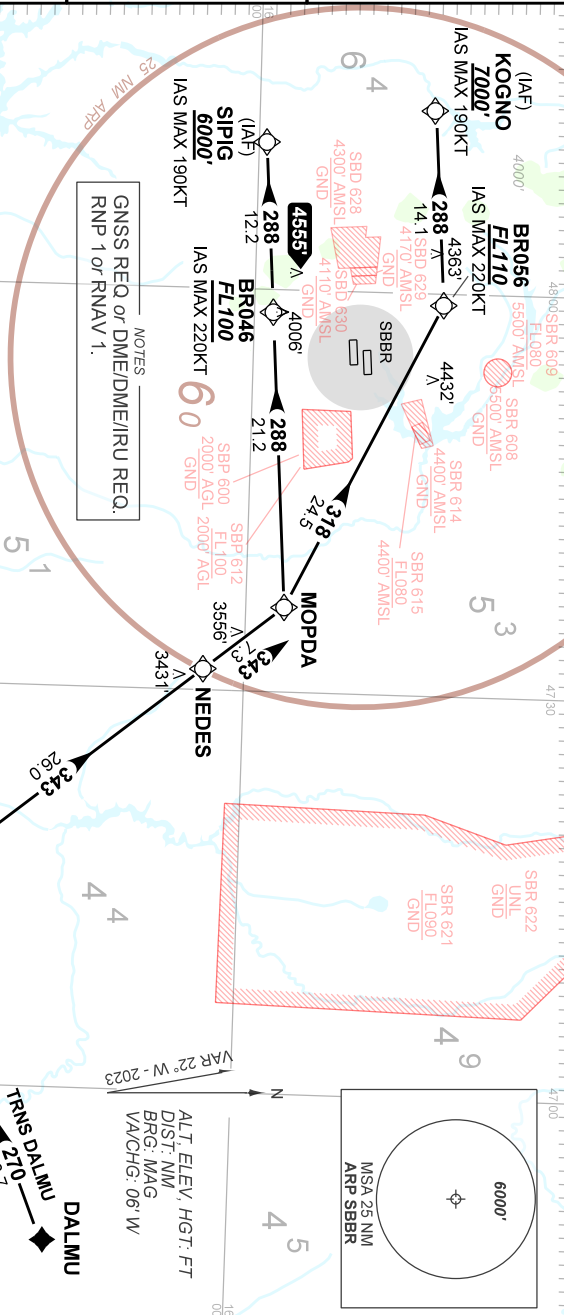
TA 7000'	D-ATIS 127.80	ACC BRASÍLIA 133.10 133.90 125.55 124.30	APP BRASÍLIA 119.50 129.60 120.00 120.30	TWR BRASÍLIA 118.10 118.45 118.75
----------	------------------	--	--	--------------------------------------

DEPARTAMENTO DE CONTROLE DO ESPAÇO AERÉO

COMUNICATION FAILURE

Aoionar transponder A7600, completar a chegada até o IAF e executar o procedimento em uso pelo ATIS.  
Set transponder A7600, complete arrival until IAF and execute the procedure in use by ATIS.

- NOTES
- GNSS REQ. or DME/DME/RU REQ.  
RNP 1 or RNAV 1.
- 1 - DME críticos: APO, FSA, GMM, GNV e LUZ. Críticos DME: APO, FSA, GMM, GNV e LUZ.
  - 2 - Para aeronaves não equipadas com GNSS: vigilância ATS requerido. For aircraft non equipped with GNSS: ATS surveillance required.
  - 3 - SIPIG MNM ALI poderá ser 7000' de acordo com a IAP em uso. SIPIG MNM ALI may be 7000' according to the IAP in use.



SCALE

2 0

10 NM

2 0

10

20 km

NOT TO SCALE

CHANGES: RMK