

**INSTRUMENT APPROACH  
CHART (IAC)**

**SALVADOR / Deputado Luís Eduardo Magalhães, INTL (SBSV)**

**RNAV(GNSS) RWY 17**

(CAT A, B, C)

**AD ELEV: 66'**

D-ATIS <b>127.75</b>	APP SALVADOR <b>119.35 119.80 120.80 129.45</b>	TWR SALVADOR <b>118.30 118.60 118.95 121.10</b>	GNDC SALVADOR <b>121.90</b>
<b>N/A</b>	FINAL CRS <b>167°</b>	FAF: <b>1670'</b>	LNNAV MDA / (OCH): <b>1030' / (1000')</b>

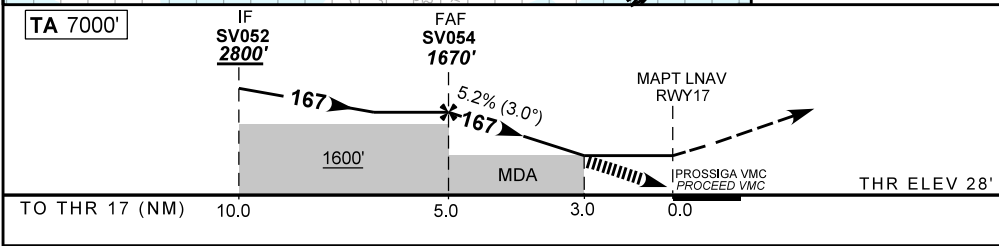
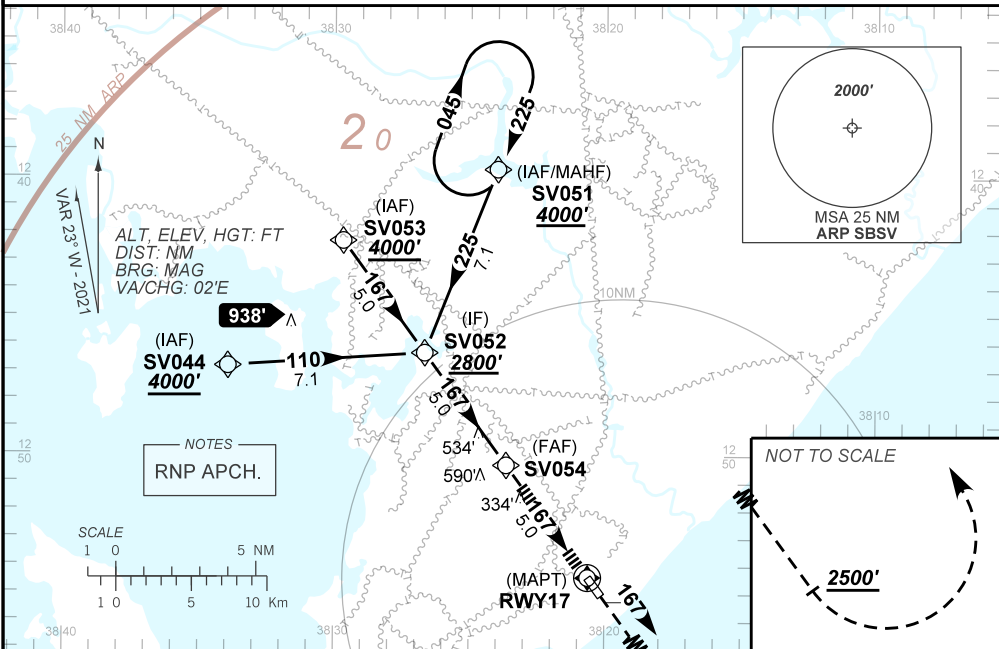
APCH Perdida: Subir para **4000'**. Manter rumo **167** até **2500'**. Após, curvar à ESQUERDA direto SV051 para espera.

Missed APCH: Climb to **4000'**. Maintain course **167** until **2500'**. After, Turn LEFT direct to SV051 for holding.

RMK: Prosseguir VMC a partir de 3NM do MAPT ou efetuar aproximação perdida.

Proceed VMC at 3NM to MAPT or perform the Missed Approach.

DEPARTAMENTO DE CONTROLE DO ESPAÇO AÉREO



	SV054	4.0	3.0	RWY17	Ground Speed (KT)	090	110	130	150	170	190
	1670	1352	1030	ALT	FPM	500	600	700	800	NA	
	1642	1324	1000	(HGT)	FAF-MAPT	NIL					

STRAIGHT-IN	CAT	A	B	C	D	E	
	LNNAV	MDA / (OCH)	1030' / (1000')			NA	
		ALS/NO ALS/ RVR ALS (m)					NIL / 5000 / NIL
CIRCLING	MDA / (OCH)	NA					
	VIS (m)						

CHANGES: MNM OPR, THR ELEV.