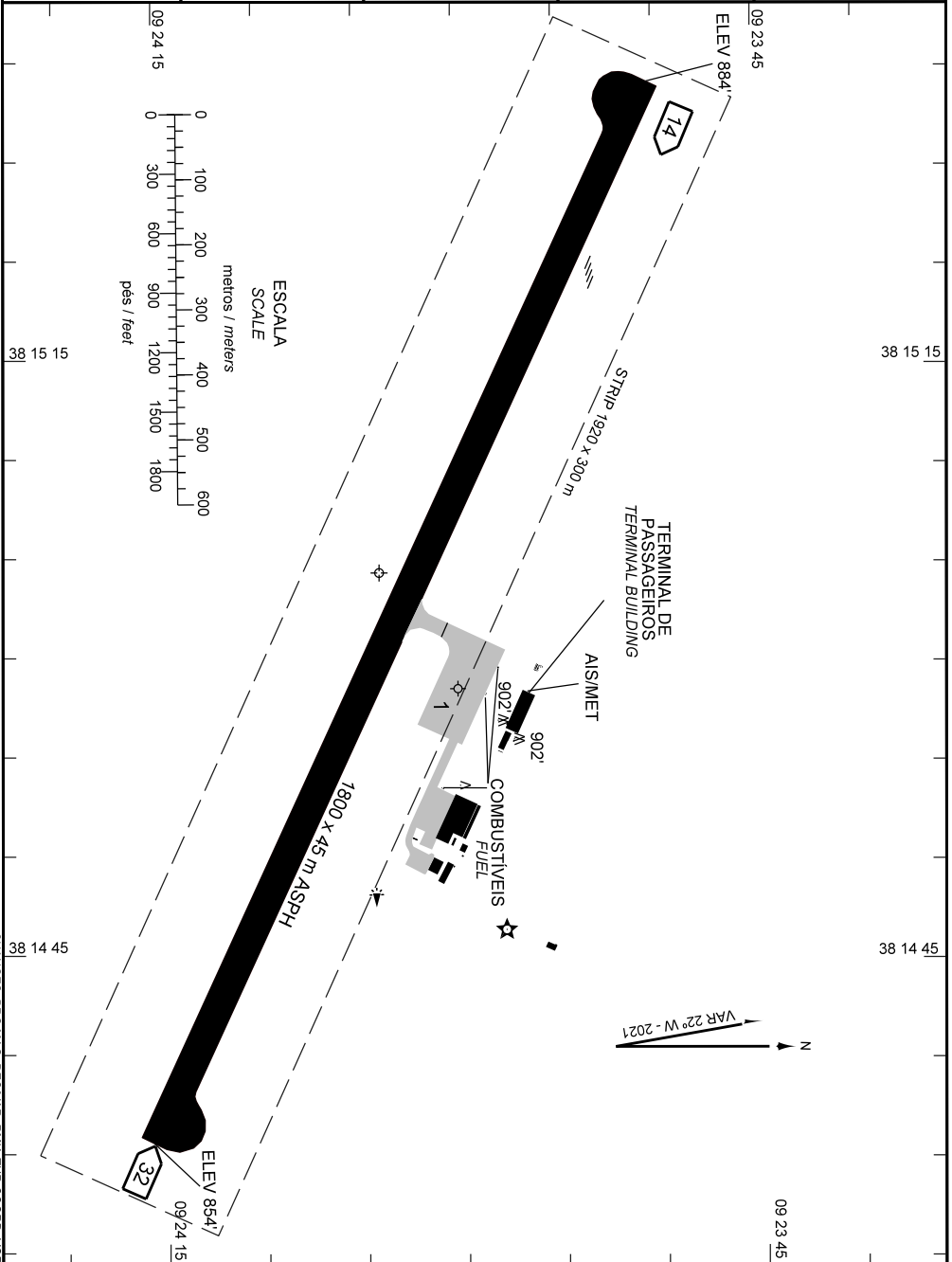


AD ELEV: 883'

ARP S09 24 04 W038 15 04

ATIS NIL	CLRD NIL	GNDC NIL	AFIS 125.85	APRON NIL
-------------	-------------	-------------	----------------	--------------



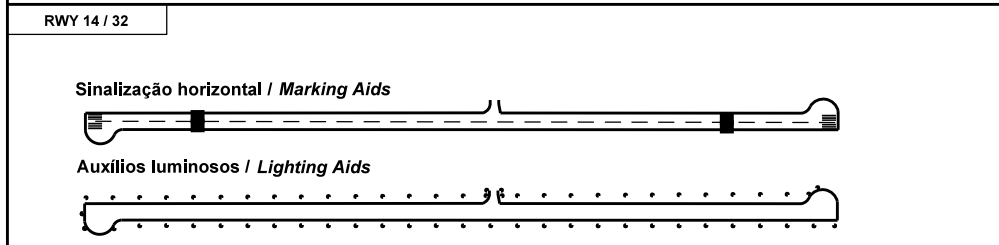
CHANGES: BRG MAG. DECVAR. RMK. THR COORD. VOR.

ADC - SBUF: INFORMAÇÕES COMPLEMENTARES / COMPLEMENTARY INFORMATION

CARACTERÍSTICAS FÍSICAS / PHYSICAL CHARACTERISTICS											
PISTA RUNWAY				DIMENSÕES(m) DIMENSIONS(m)				PCN	TIPO DE SUPERFÍCIE SURFACE KIND		
RWY	BRG MAG	Tipo Type	RCD	RWY	SWY	CWY	STRIP	RWY	RWY	SWY	
a	b	c	d	e	f	g	h	i	j	k	
14	138	NINST	3C	1800x45			1920 x 300	35/F/C/X/U	ASPH		
32	318	NINST	3C								

DISTÂNCIAS DECLARADAS, AUXÍLIOS VISUAIS E COORDENADAS DAS CABECEIRAS DECLARED DISTANCES, VISUAL AIDS AND THRESHOLD COORDINATES							
RWY	TORA(m)	TODA(m)	ASDA(m)	LDA(m)	AUXÍLIOS / AIDS	ALTURA GEODAL(m) GEOD HEIGHT(m)	COORDENADAS COORDINATES
14	1800	1800	1800	1800	PAPI	- 10,76	S09 23 50 W038 15 28
32	1800	1800	1800	1800		- 10,76	S09 24 16 W038 14 35

SERVIÇO DE SALVAMENTO E CONTRAINCÊNDIO / RESCUE AND FIRE FIGHTING SERVICE: RFFS REQ - NIL



RMK: 1) INS: S09 24.00 / W038 14.97
2) MEHT: RWY 14 - 48FT.

CHANGES: BRG MAG, DECAVAR, RMK, THR COORD, VOR.