

INSTRUMENT APPROACH
CHART (IAC)

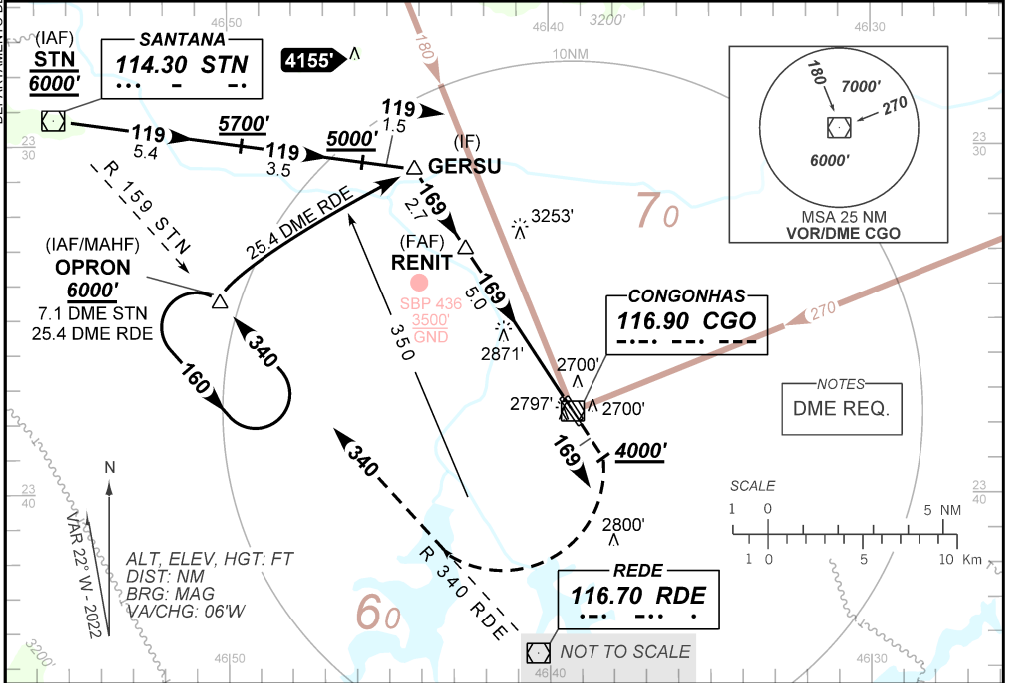
SÃO PAULO / Congonhas (SBSP)

VOR Z RWY 17L/17R

AD ELEV: 2631'

D-ATIS 127.65	APP SÃO PAULO 129.75 119.15 120.45 120.85 133.85			TWR SÃO PAULO 118.05 127.15	GNDC SÃO PAULO 121.90
VOR CGO 116.90 MHz	FINAL CRS 169°	FAF: 4240'	N/A	VOR MDA / (OCH): 3140' / (560')	

APCH Perdida: 1) Subir para **6000'**. Manter a RDL **169** RDE, gradiente MNM 5%. Após, **4000'** curvar à DIREITA RDL **339** RDE ou RDL **159** STN até OPRON para espera. 2) IAS MAX 180KT.
Missed APCH: 1) Climb to **6000'**. Maintain RDL **169** RDE, gradient 5%. After, **4000'** turn RIGHT to **339** RDL RDE or **159** RDL STN VOR to OPRON for holding. 2) IAS MAX 180KT.



TA 8000'	IF GERSU	FAF RENIT	MAPT RW17L RW17R			THR 17L ELEV 2590' THR 17R ELEV 2590'
	4800'	4240'	4200'	3500'	MDA	
TO THR 17 (NM)	7.7	5.0	3.2	1.6	0.0	
TO CGO (DME)	8.2	5.5	3.7	2.1	0.5	

	RENIT	4.0	3.0	2.0	1.6	RWY17	Ground Speed (KT)	090	110	130	150	170	190
	4240	3914	3595	3277	3140	ALT	FPM	500	600	700	800	900	NA
	1650	1324	1005	687	560	(HGT)	FAF-MAPT	NA					

STRAIGHT-IN	CAT	A	B	C	D	E
	MDA / (OCH)	3140' / (560')				
VOR	ALS/NO ALS/ RVR ALS (m)	800 / 1600 / NIL			1700 / 2500 / NIL	
		NA				
CIRCLING	MDA / (OCH)	NA				
	VIS (m)					