

**INSTRUMENT APPROACH
CHART (IAC)**

RIO BRANCO / Plácido de Castro, INTL (SBRB)

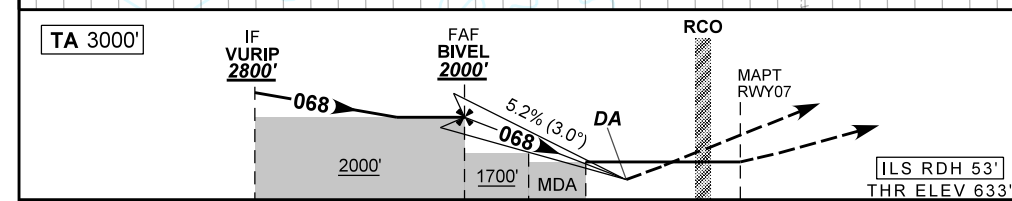
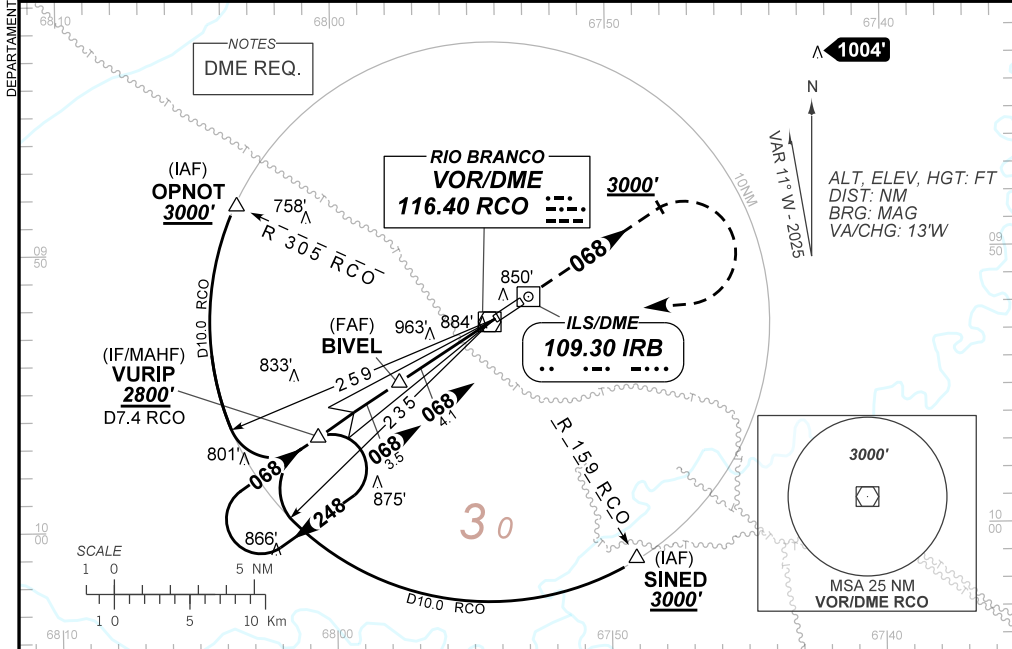
AD ELEV: 633'

ILS Y or LOC Y RWY 07

D-ATIS NIL	APP RIO BRANCO 119.90		TWR RIO BRANCO 118.70	GNDC NIL
ILS/DME IRB 109.30 MHz	FINAL CRS 068°	FAF: 2000'	CAT I DA / (OCH): REFER TO MNM	LOC MDA / (OCH): 1100' / (470')

APCH Perdida: Subir para **4000'**. Manter rumo **068** até **3000'**. Após, curvar à DIREITA direto VOR RCO.
Após, interceptar a RDL **248** do VOR RCO até VURIP para espera.
Missed APCH: Climb to **4000'**. Maintain course **068** until **3000'**. After, turn RIGHT direct RCO VOR.
After, intercept **248** RDL RCO VOR until VURIP for holding.

RMK: (*)VIS RVR ALS 550m para APCH utilizando Diretor de Voo, Piloto Automático ou Head-Up Display(HUD).
(*)VIS RVR ALS 550m for APCH using a Flight Director, Autopilot or Head-Up Display (HUD).



TO THR 07 (NM)	7.6	4.1	3.2	1.3	0.2	0.0
TO IRB (DME)	9.0	5.5	4.6	2.4	1.6	1.4

	BIVEL	3.2	2.0	1.3	RWY07	Ground Speed (KT)	090	110	130	150	170	190
	2000	1705	1323	1100	ALT	FPM	500	600	700	800	900	1000
	1367	1072	690	470	(HGT)	FAF-MAPT	NA					

STRAIGHT-IN	CAT	A	B	C	D	E
CAT I	DA / (OCH)	883' / (250')				986' / (353')
	ALS/NO ALS/ RVR ALS (m)	800 / 1300 / 700(*)				900 / 1600 / 850
LOC	MDA / (OCH)	1100' / (470')				
	ALS/NO ALS/ RVR ALS (m)	800 / 1600 / 700		1500 / 2200 / 1400		
CIRCLING	MDA / (OCH)	NA				
	VIS (m)					