

**INSTRUMENT APPROACH
CHART (IAC)**

PORTO VELHO / Zironi (SSZD)

RNP RWY 04

AD ELEV: 276'

**USO EXCLUSIVO ACFT MILITARES
MILITARY ACFT ONLY**

(CAT A, B, C)

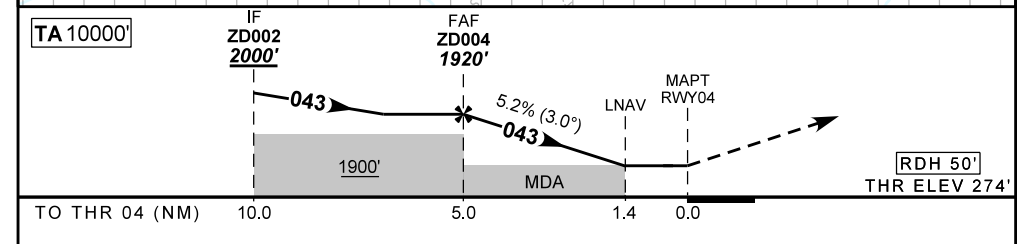
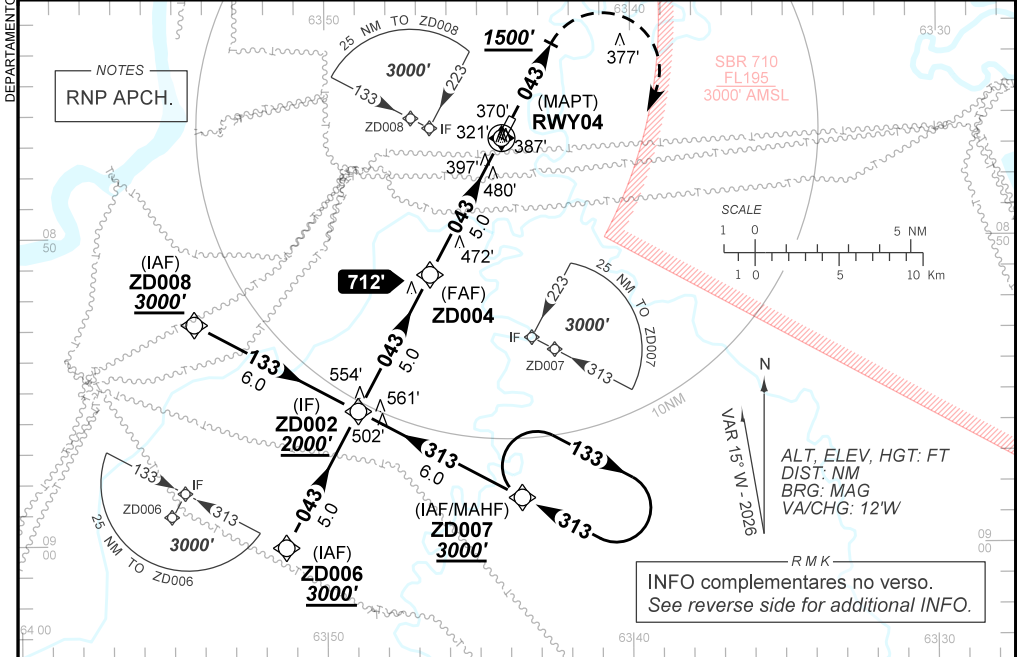
ATIS NIL	APP PORTO VELHO 120.25 120.80	TWR PORTO VELHO 118.20 118.55	GNDC NIL
--------------------	---	---	--------------------

NA	FINAL CRS 043°	FAF: 1920'	NA	LNAV RASS (SBPV) MDA / (OCH): 760' / (490')
-----------	--------------------------	----------------------	-----------	--

APCH Perdida: Subir para **3000'**. Manter proa **043°** até **1500'**. Após curvar à DIREITA direto ZD007 para espera.

Missed APCH: Climb to **3000'**. Maintain heading **043°** until **1500'**. After, turn RIGHT direct ZD007 for holding.

RMK: Realização do procedimento condicionada às regras específicas definidas pelo COMAER.
Procedure according to specific rules defined by COMAER.



	ZD004	4.0	3.0	2.0	1.4	RWY04	Ground Speed (KT)	090	110	130	150	170	190
		1920	1598	1279	961	760	FPM	500	600	700	800	NA	
		1646	1324	1005	687	490	FAF-MAPT	NIL					

STRAIGHT-IN	CAT	A	B	C	D	E
	LNAV	MDA / (OCH)	NA			
LNAV RASS (SBPV)	MDA / (OCH)	760' / (490')				NA
		NIL / 1600 / NIL		NIL / 2300 / NIL		
CIRCLING	MDA / (OCH)	NA				
	VIS (m)					

AIRAC AMDT 2607A1 09 JUL 26

SSZD_IAC_00A 1/2

USO EXCLUSIVO ACFT MILITARES / MILITARY ACFT ONLY

IAC RNP RWY 04

CHANGES: HDG, LAYOUT, TA, VAR.

DEPARTAMENTO DE CONTROLE DO ESPAÇO AÉREO

USO EXCLUSIVO ACFT MILITARES
MILITARY ACFT ONLY

DEPARTAMENTO DE CONTROLE DO ESPAÇO AÉREO

— R M K —

2 - Utilizar o altímetro de SBPV
Use altimeter setting from SBPV.

3 - Dados complementares:
Complementary data:

IDENT	LATITUDE/LONGITUDE
ZD006	S 09:00.09 / W 63:51.34
ZD002	S 08:55.66 / W 63:48.96
ZD007	S 08:58.49 / W 63:43.61
ZD004	S 08:51.22 / W 63:46.58
ZD008	S 08:52.82 / W 63:54.31
RWY04	S 08:46.79 / W 63:44.21

CHANGES: HDG. LAYOUT. TA. VAR.